

Connectivity

Using the Cisco VPN Client to connect to the CUE Network

Content

Overview

Pre-Requisites

Procedure – Toggling between Simple and Advanced modes

Procedure – Connecting to CUE during an active session

Procedure – Connecting to CUE prior to logging on

Procedure – Allowing VPN connections prior to logging on

Contact the CUE Helpdesk

Overview

The following procedures outline the steps needed to use the Cisco VPN Client to connect to the CUE Network.

Note: VPN is an acronym for Virtual Private Network

The Cisco VPN Client creates a secure tunnel across an un-trusted network, such as the Internet, to the CUE network allowing users to access resources that would otherwise be unavailable.

The following is a list of several resources that are currently unavailable to users offsite unless they use the Cisco VPN Client:

- Logon scripts (requires the VPN connection prior to logon)
- Access to network drives
- Access to network printers
- Access to the Online CUE Helpdesk
- Instant Messaging (Office Communicator)
- Outlook Email (Outlook Web Access is still accessible without a VPN connection)

A VPN connection is not suitable for working on large files hosted on the network as this requires the file to be copied to and from the CUE network as you open and edit the document.

Important: The Systems and Networking team strongly recommends editing documents on the network through the use of a terminal session. If you require an offline copy of the document you can then copy the document to your laptop via the VPN connection.

If you have any comments or queries about the content of this document, or have suggestions regarding the content of future documents, please contact the CUE Helpdesk. Please see the end of this document for contact details.

Pre-Requisites

- CUE-configured laptop or real PC
- Cisco VPN Client
- Valid CUE network credentials
- An internet connection

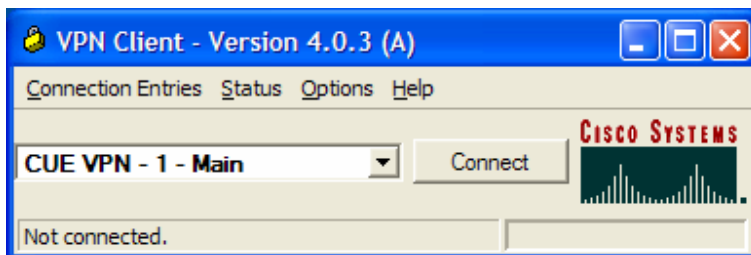
Note: You will be unable to establish a VPN connection while connected directly to the CUE Network

Procedure – Toggling between Simple and Advanced modes

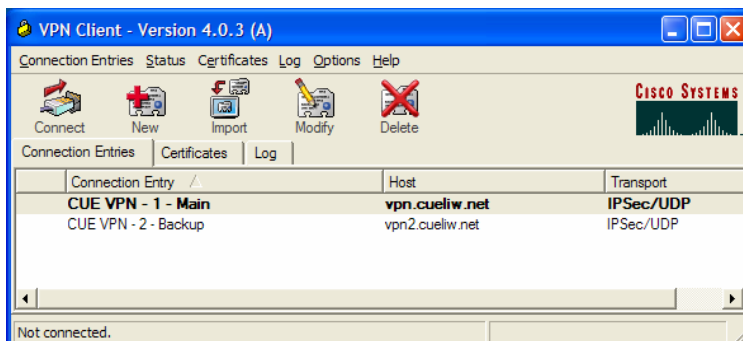
The VPN Client software has two modes: simple and advanced. While there is no functional difference in the Cisco VPN Client between the modes the Simple interface is cleaner with less unnecessary clutter on-screen. Advanced mode is only required when global settings need to be modified or connection profiles, both new and existing, need to be altered.

To toggle between the two modes press 'CTRL' + 'M'

Simple:



Advanced:

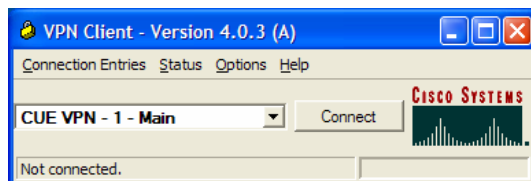


Procedure – Connecting to CUE during an active session

The following procedure assumes the Cisco VPN Client is in Simple mode – please see the procedure on 'Toggling between Simple and Advanced mode' for details on changing modes.

Note: Before proceeding please confirm that you meet the pre-requisite criteria.

- Click on Start → VPN Client
- Select the Connection profile from the drop-down menu



- Click Connect
- When asked for your username and password enter your CUE network login details

Once connected you should see a small golden padlock in your System Tray in the bottom left of the screen.

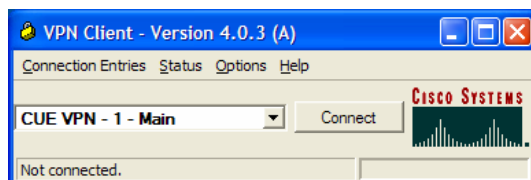
The Cisco VPN Client will disconnect when you log off.

Procedure – Connecting to CUE prior to logging on

The following procedure assumes that the Cisco VPN Client has been set up to allow the software to run prior to logging on. Please see the procedure on 'Allowing VPN connections prior to logging on' for further details.

Note: Before proceeding please confirm that you meet the pre-requisite criteria.

At the logon screen you will be presented with the Cisco VPN Client in the bottom-right of the screen



- Click Connect

- When asked for your username and password enter your CUE network login details

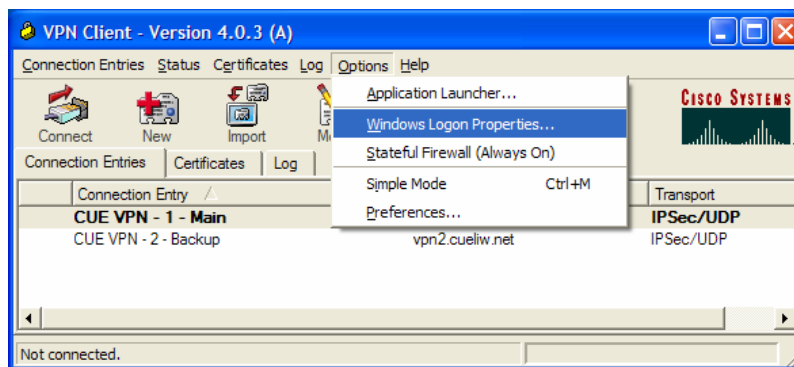
Once the VPN connection has been established log in as normal.

When the desktop appears you should see a small golden padlock in your System Tray in the bottom left of the screen.

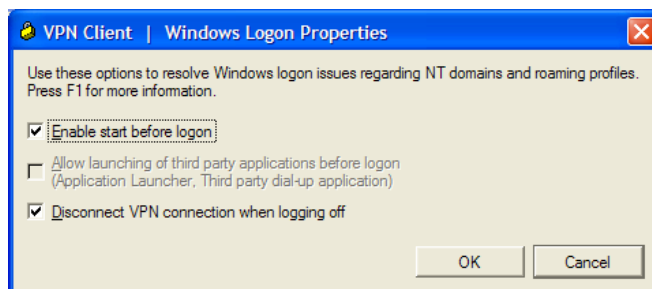
The Cisco VPN Client will disconnect when you log off.

Procedure – Allowing VPN connections prior to logging on

- Click Start → VPN Client
- Switch to Advanced mode by pressing 'CTRL' + 'M'
- Click on Options → Windows Logon Properties



- Ensure the 'Enable start before logon' checkbox is ticked



- Click OK
- Restart the computer/laptop

Contact the CUE Helpdesk

You can connect the CUE Helpdesk via the Online Helpdesk (<https://helpdesk>), email (ITSupport@cad.coventry.ac.uk), instant message a member of the helpdesk (add 'Luke Maslany' to your Office Communicator contacts) or by telephoning internal extension 2402 or 2403.
